

# VOTE SAFE VOTE EARLY

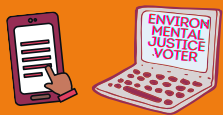
**LAST DAY  
TO VOTE  
TUESDAY  
AUG. 31**

**18th  
Assembly  
District,  
Special  
General  
Election**

**Vote-by-mail ballots will be sent to every eligible registered voter beginning August 2nd. Make sure you are ready to vote!**

**Online at:  
registertovote.ca.gov**  
**You can...**

**REGISTER TO VOTE** if you will be 18, a U.S. citizen, not currently in prison or parole.



Register to vote online by August 16.

Register in-person at County Elections office up to August 31, Election Day.



**UPDATE VOTER INFORMATION** if you've moved, changed your name, or need election materials in another language.

**CHECK YOUR REGISTRATION** status to confirm you are registered to vote, your mailing address, voting location, and voting materials.

## VOTE-BY-MAIL

- Your ballot will come with pre-paid postage, no stamp required!
- Vote for your candidate of choice to represent your values and beliefs for environmental and social justice in the State Assembly.
- Make sure your signature on the return envelope matches your CA ID or drivers license.

## 4 WAYS TO RETURN YOUR BALLOT

By mail,  
no stamp  
needed



Voting  
Location



Official  
Dropbox



County  
Elections  
office



## VOTE IN PERSON

- Follow COVID-19 health and safety measures.
- Find your voting location: [www.acvote.org/GO](http://www.acvote.org/GO)
- Vote between Saturday, August 28 and Monday, August 30, 9am-5pm
- Election Day, Tuesday, August 31, 7am-8pm.



**County Election Office:**  
**Alameda County Registrar of Voters**  
1225 Fallon St. Oakland, CA 9461  
P: (510) 272-6973 | Online: [acvote.org](http://acvote.org)



@cbe\_cal



@cbecal

COMMUNITIES  
FOR A BETTER  
ENVIRONMENT  
established 1978

**#EnvironmentalJusticeVoter**  
**#VoteSafe**